

Parent instructions to add extra phone number to SchoolMessenger

The image shows a two-part screenshot of the PowerSchool Parent Portal interface. The top part shows the main navigation area with a 'Navigation' pane on the left and a top header with the PowerSchool logo, 'Welcome, Tester', and links for 'Help' and 'Sign Out'. A callout box points to the 'Navigation' pane, stating: 'Sign in to the Parent Portal. Under the Navigation Pane, you will find a link to SchoolMessenger'. Below this, a 'SchoolMessenger' link with a circular icon is shown. Another callout box points to a share icon in the top right, stating: 'This link can also be found in the App Drawer'. The bottom part of the image shows the 'App Drawer' for SchoolMessenger, which is a blue bar with a hamburger menu icon and the text 'SCHOOLMESSENGER®'. A callout box points to the hamburger menu icon, stating: 'Click on [hamburger icon] and then on Preferences'. Below the drawer, a list of options is shown: 'Messages', 'Preferences', 'Contacts', 'Manage Groups', 'Join Groups', and 'Log out'. A red arrow points from the 'Preferences' option in the list back to the callout box.

PowerSchool Welcome, Tester | Help | Sign Out

Navigation

Sign in to the Parent Portal.
Under the Navigation Pane, you will find a link to SchoolMessenger

SchoolMessenger

This link can also be found in the App Drawer

SCHOOLMESSENGER®

Click on [hamburger icon] and then on Preferences

Messages

Preferences

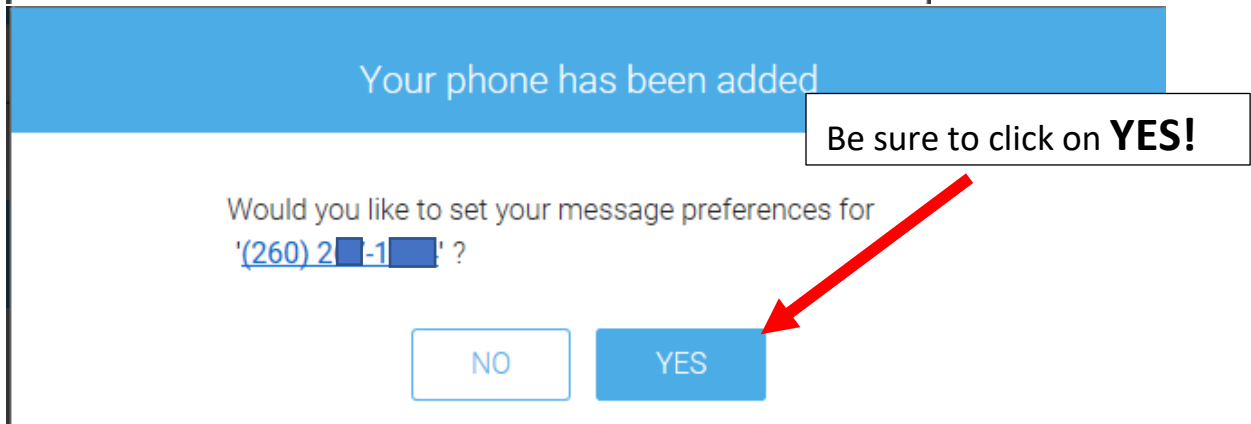
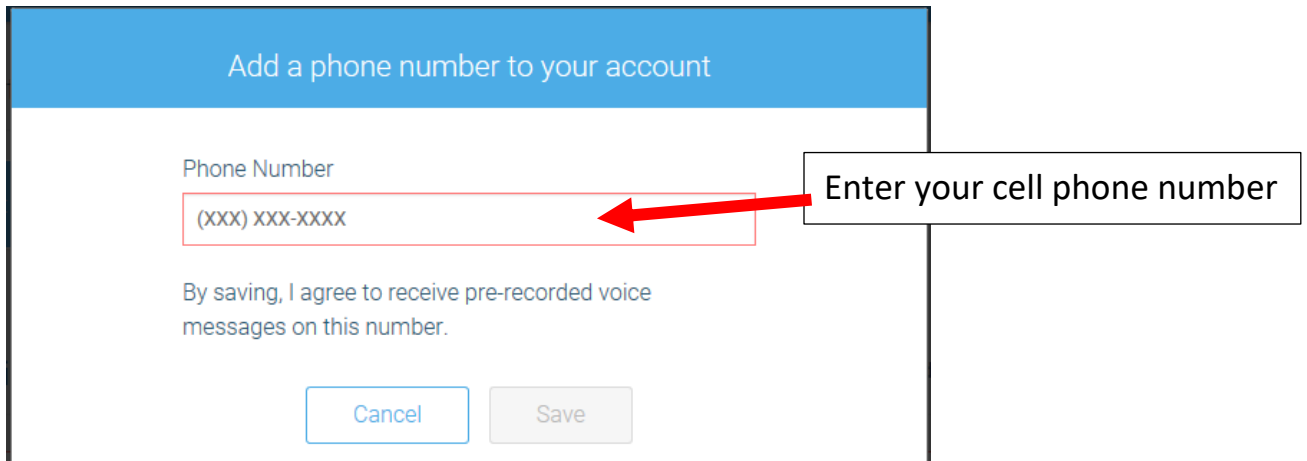
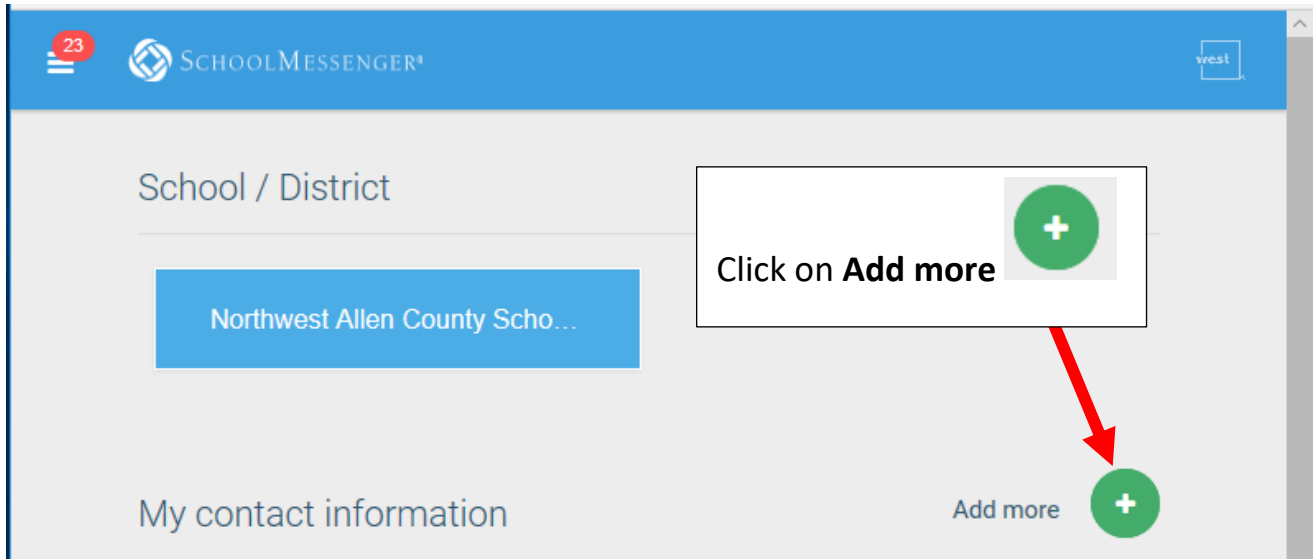
Contacts

Manage Groups

Join Groups

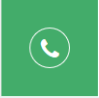
Log out

Parent instructions to add extra phone number to SchoolMessenger



Parent instructions to add extra phone number to SchoolMessenger

My Phone

 (260) 2-1-1 [It's OK to call this phone | Change](#)
I consent to receive calls containing pre-recorded voice messages.

Choose the messages you are interested in receiving from Northwest Allen County Schools, and how you want to receive them.

Non-school Hours Emergency	School Hours Emergency	Attendance	General
<input type="radio"/> Call me <input checked="" type="radio"/> Send text	<input type="radio"/> Call me <input checked="" type="radio"/> Send text	<input type="radio"/> Call me <input type="radio"/> Send text	<input type="radio"/> Call me <input type="radio"/> Send text

Survey

Call me

Surveys are not displayed in SchoolMessenger Messages

[Cancel](#) [Save](#)

Non-school Hours Emergency	School Hours Emergency
<input type="radio"/> Call me <input checked="" type="radio"/> Send text	<input type="radio"/> Call me <input checked="" type="radio"/> Send text

Set Non-school Hours Emergency and School Hours Emergency to Send Text.